



# DAILY LUNCH SPECIALS

# JANUARY



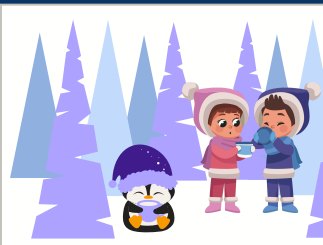
**MON**

**TUES**

**WED**

**THURS**

**FRI**



**1** **HAPPY**  
*new*  
**YEAR**

**2** **WINTER**  
**BREAK**



**6** **NON-STUDENT**  
**DAY**

**7** *General Tso Chicken*  
*Fried Rice*  
*Chocolate Chip Cookie*

**8** *Bacon Western Cheeseburger*  
*Assorted Chips*  
*BBQ Sauce*

**9** *Tuscan Chicken Pasta*  
*Cheesy Breadstick*

**10** *Seasoned Popcorn Chicken*  
*Waffle Cut Fries*  
*Sweet Chili Sauce*  
*Chocolate Chip Cookie*


**13** *Walking Taco with*  
*Nacho Cheese Doritos*  
*Shredded Cheese and*  
*Shredded Lettuce*

**14** *Chicken Alfredo*  
*with Penne Pasta*  
*Garlic Knot Roll*

**15** *Bone-In Chicken Wings*  
*Drizzled with Buffalo and*  
*Homemade Ranch Dressing*  
*Dinner Roll*

**16** *Teriyaki Chicken*  
*with Garlic Noodles*  
*Topped with Scallions*

**17** *Breaded Chicken Bites*  
*Crinkle Cut Fries*  
*Special Dipping Sauce*  
*Texas Toast*

**20**   
**Martin Luther King Jr**  
**Day**

**21** *General Tso Chicken*  
*Fried Rice*  
*Chocolate Chip Cookie*

**22** *Bacon Western Cheeseburger*  
*Assorted Chips*  
*BBQ Sauce*

**23** *Cajun Chicken*  
*with Penne Pasta*  
*Texas Toast*

**24** *Seasoned Popcorn Chicken*  
*Waffle Cut Fries*  
*Sweet Chili Sauce*  
*Chocolate Chip Cookie*

**27** *Walking Taco with*  
*Nacho Cheese Doritos*  
*Shredded Cheese and*  
*Shredded Lettuce*

**28** *Spaghetti with Meat Sauce*  
*Cheesy Bread Stick*

**29** *Bone-In Chicken Wings*  
*Drizzled with Buffalo and*  
*Homemade Ranch Dressing*  
*Dinner Roll*

**30** **NEW** *Carnitas*  
*Refried Beans*  
*Spanish Rice*  
*Tortilla Chips*

**31** *Breaded Chicken Bites*  
*Crinkle Cut Fries*  
*Special Dipping Sauce*  
*Texas Toast*

[GARDENGROVE.HEALTHELIVING.NET](http://GARDENGROVE.HEALTHELIVING.NET)

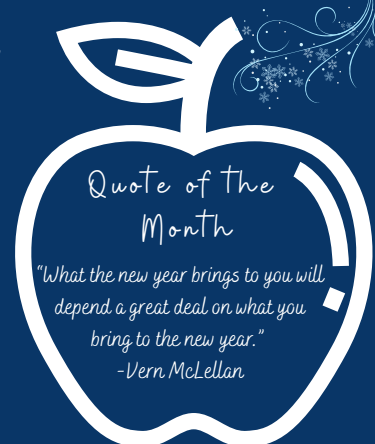
This institution is an equal opportunity employer and provider.



Scan QR code to download menu

Meals are available for all  
GGUSD students at no cost.

For more information about our menus, please visit:  
[gardengrove.healtheliving.net](http://gardengrove.healtheliving.net)



Quote of the Month

"What the new year brings to you will depend a great deal on what you bring to the new year."

-Vern McLellan

Adult/Non-GGUSD Student/  
Ala Carte Pricing  
Breakfast: \$4.50  
Lunch: \$6.50